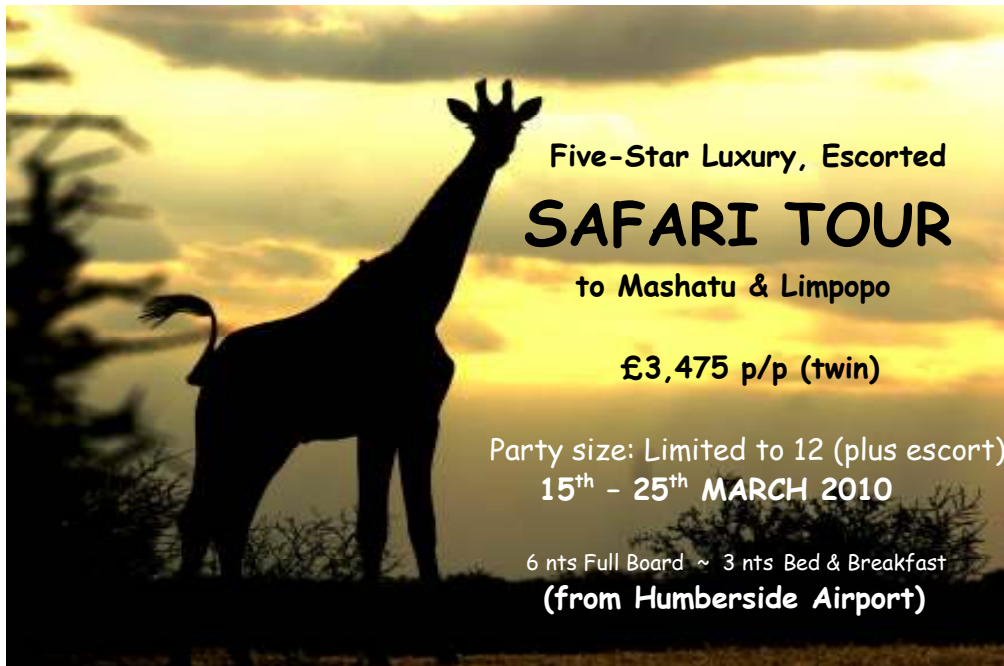


*Due to popular demand ... a 3rd special safari holiday celebrating 21 years in business*



Five-Star Luxury, Escorted  
**SAFARI TOUR**  
to Mashatu & Limpopo

£3,475 p/p (twin)

Party size: Limited to 12 (plus escort)  
**15<sup>th</sup> - 25<sup>th</sup> MARCH 2010**

6 nts Full Board ~ 3 nts Bed & Breakfast  
**(from Humberside Airport)**

*Ten nights of scenic splendour & world-class hospitality in the tranquil African bush. Relax and luxuriate in a stylish South African country hotel, observing glorious scenery and abundant birdlife at close quarters. With experienced rangers from our private game-lodge in the Botswana bush, we take morning & sunset game-drives to follow herds of elephant and other big game. And all from Humberside Airport.*

**Mon 15<sup>th</sup>** Make your way to Humberside Airport for the flight with KLM to Amsterdam, check in no later than 0525am.

Depart Humberside Airport	Flight KL1486	0625 hrs
Arrive Amsterdam		0840 hrs

Continue to International Departures for the flight with KLM to Johannesburg.

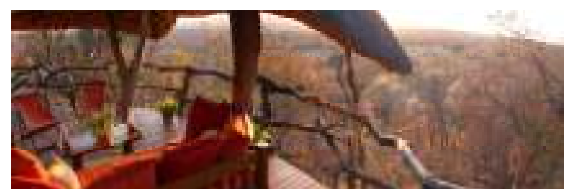
Depart Amsterdam	Flight KL591	1005 hrs
Arrive Johannesburg		2205 hrs



KLM is one of the only airlines to fly to southern Africa during daylight hours which, if clear, affords a spectacular opportunity for to observe the African continent's landscapes all the way there. Upon arrival in Johannesburg we shall clear immigration & customs formalities and baggage reclaim we make our way to the Mondior Concorde Hotel for overnight accommodation.

At the Mondior Concorde Hotel, conveniently located a 10 minute shuttle ride away from the airport, each room has tea & coffee making facilities as well as a mini fridge, a walk-in shower and a flat-screen remote controlled television showing selected satellite channels. Oriana, the delightful breakfast restaurant on the ground floor, overlooks the gardens. The contemporary cocktail bar, The Silver Moon, is also situated on the ground floor and offers a variety of gorgeous cocktails and shooters as well as traditional bar service.

**Tue 16<sup>th</sup>**  
FB After breakfast we shall be collected for the three-hour drive by road to Ants Nest for a 'soft safari' stay of two nights (inclusive of all meals, game drives, guided walks, and locally branded drinks).



Ant's Nest is a very special bush home, situated on adjoining private Game Reserves in the magnificent malaria free Waterberg region. The aim is to provide a uniquely flexible safari experience, offering guests a wide choice of activities. Ant's Nest is the original homestead with five en-suite bedrooms, landscaped gardens and a large swimming pool. Ant's Nest offers the opportunities for some of the greatest game viewing in the African Bush - including from horseback, catering for riders of all abilities.

**Wed 17<sup>th</sup>** Game-viewing, bird-watching, walking, swimming or relaxing in the beautiful surrounds of our bush home, Ant's Nest. (All meals included)  
**FB**

**Thu 18<sup>th</sup>** Transfer to the Coach House in Tzaneen (approx. 4 hours) for the next two night's accommodation (Bed and Breakfast).  
**BB**

Set amidst stunning scenery, the Coach House carries both a five-star grading and a silver classification for outstanding hospitality. Accommodation is of a high standard and each bedroom has a veranda. The public rooms are beautifully appointed and the restaurant makes extensive use of local produce. Within the gardens is a swimming pool and also wonderful views of the nearby mountains.



**Fri 19<sup>th</sup>** Enjoy an escorted tour of this part of the Limpopo Province of South Africa  
**BB**

**Sat 20<sup>th</sup>** Today we shall be taken on the 4-hour drive by road to the Great Limpopo River, South Africa's northern border with Botswana, and we'll be collected on the other side by game-rangers from Mashatu Game Reserve. The transfer back through the reserve to Mashatu Main Lodge is actually like a game-drive in itself. We'll be here for a 4-night stay (inclusive of all meals & game-viewing activities)  
**FB**

**Sat 20<sup>th</sup> til Wed 24<sup>th</sup> March**

**FB** Game-viewing around Mashatu Private Game Reserve. In the remote eastern corner of Botswana, at the confluence of the Limpopo and Shashe rivers, lies the Tuli enclave, a diverse wilderness of savannah, riverine forests, marshland and open plains. Here is situated Mashatu which offers excellent game viewing in an unspoilt landscape. Dedicated Tswana rangers and trackers are keen to show you their world, inhabited by zebra, wildebeest, eland and predators such as lion, cheetah, leopard and hyena. The vast herds of elephant roaming amongst the baobabs give credence to the name for the area "Land of the Giants". Bird-life here is prolific with over 360 species being recorded.

Our extended stay here awards us the opportunity of visiting one of the many Stone Age sites scattered throughout the area with material dating back at least 100 000 years. The Iron Age is also very well represented with some spectacular stonewalled cliff top sites.



Taking a good camera or video camcorder is a real must because photographic opportunities exist everywhere!

(Photos taken by Chris Moran on recent escorted safaris)

**Wed 24<sup>th</sup>**      After a final morning game-drive, we shall be transferred from Main Lodge back over the Botswana border at Pont Drift and met for our onward road transfer to Johannesburg's Oliver Tambo International Airport. The 6-hour journey will be broken by a reasonable lunch break  
 FB

As check-in at Johannesburg can sometimes be a tedious affair we always include use of the Premier Club Lounge for all our travelling guests (Business Class passengers have use of their own Lounge). This comfortable and peaceful lounge has shower facilities and a buffet with snacks, tea & coffee and alcoholic drinks. Bags can be left here so you can relax and do some final curio shopping. Johannesburg is a great airport at which to buy excellent reminders of this African adventure.

<b>Thu 25<sup>th</sup></b>	<b>Depart Johannesburg</b>	<b>Flight KL 592</b>	<b>0005 hrs</b>
	<b>Arrive Amsterdam</b>		<b>1020 hrs</b>
	<b>Depart Amsterdam</b>	<b>Flight KL1497</b>	<b>1710 hrs</b>
	<b>Arrive Humberstone</b>		<b>1710 hrs</b>

---

**Costs :**      **£ 3,475 per person** (each in a twin share)  
                   **£    734 single supplement**  
                   **£ 1,174 KLM Business Class supplement** (subject to availability)

---



We highly recommend that you take out a **Travel Insurance** policy for a journey such as this. Following 21 years of successfully and responsibly selling travel insurance and due to a recent new EU Directive, as we are not FSA-authorized, we are no longer allowed to sell or to even discuss travel insurance with our clientele. If you would like a quotation from the company we have always represented, Holiday Extras, please visit [www.insurancereferrals.co.uk](http://www.insurancereferrals.co.uk) or call 0870 360 2742 quoting our ABTA licence number, which is 99942, for a list of our rates.

Mashatu is a malaria area at this time of year and so we officially have to advise the taking of anti-malarial drugs for the stay there. As we are visiting during the rainy season, the risk is at its highest but please do consult your own doctor for his/her advice about this and all other **recommended vaccinations**.

All efforts are made to ensure that each tour itinerary runs as planned however we do reserve the right to make changes should they become necessary or beyond our control. You are assured that the standard of any changes would remain at our customary high level.

---

Should you like further information or would like to reserve places on this escorted tour, please contact Chris or Mike Moran at the Louth office or telephone **01507 600 606**.

To make a reservation please complete the enclosed booking form from our associate company, African Pride of York (ATOL no. 2949) with whom the contract will lie, and supply a deposit of 10% per person with the final balance being due by 4<sup>th</sup> January 2010.





**In the remote eastern corner of Botswana**, at the confluence of the Limpopo and Shashe rivers, lies an area known historically as the Tuli enclave - a diverse wilderness of savannah, riverine forests, marshland, open plains and sandstone outcrops. It is here that the largest of the Rattray Reserves is situated - Mashatu Game Reserve. The name is derived from the magnificent Mashatu trees, which occur throughout this immense tract of privately owned land. Mashatu is also the home of no less than seven of Africa's giants: the African elephant, the lion, giraffe, the baobab tree, the eland, the ostrich, and the kori bustard. It is fitting therefore, that some 75,000 acres / 30,000 hectares of pristine game land, be set aside for these unique, prodigious features of this exhilarating continent.

**Mashatu Game Reserve**, an area of history and legend, offers some of the most exciting game viewing in Africa. It is a place of exceptional beauty where one can explore the rugged, unspoilt African landscapes either in the comfort of open 4-wheel drive vehicles, on a walking safaris, on mountain bicycles, or horse back, guided by expert rangers and experienced trackers. In addition to the game experience, Mashatu offers a view of Africa, unchanged since the days of early visitors such as Kipling, Selous and artist/explorer Sir Thomas Baines. Historic and archaeological sites abound; notable are the Motloutse Ruins and the Pitsani Koppie sites.



The excitement of Mashatu has not changed over time. It is still home to large herds of elephant, prides of lion and cheetah. Along the river courses, huge Mashatu trees provide shade for eland, impala, wildebeest, giraffe and zebra, whilst at night, the bat-eared fox, African Wildcat and the magnificent leopard search for prey. Some 366 species of birds may be seen. Mashatu Game Reserve proudly provides a refuge for the largest, single population of elephant on privately owned land in Africa. Known as the relic herds of Shashe, these elephants are the last living testament to the great herds that once populated the meandering Limpopo valley. Today, the population on Mashatu Game Reserve alone, is estimated to number well in excess of 500.

**The wildlife experience** at Mashatu is personalised. Dedicated, experienced Tswana rangers and trackers are keen to show you their world. Radio-linked 4-wheel drive vehicles, groups of mountain bicycles or horses set out at dawn and again at dusk in search of the diverse variety of fauna and flora which abound throughout the reserve. Whether you visit Mashatu for the excitement of the big game viewing, the relaxation of unspoilt Africa or the quiet luxury of the camps, you will not be disappointed.



**Mashatu Main Camp** is the largest and most luxurious of all the camps in the Game Reserve. Completely refurbished during 2002/3, the camp offers 14 tastefully and authentically decorated suites. Each suite is furnished with two three-quarter beds, a day bed, expansive en suite bathroom with shower, bath, his and hers basins, and a second W.C.. A private lounge area overlooks the unfenced surrounding bush and 24 hour temperature control completes the comfort of each suite.

Mashatu Main Camp is elevated around a waterhole and offers excellent game viewing opportunities from within the camp itself. The dining area, stunning day lounge and "Gin Trap" bar provide diverse lookouts from which to enjoy and appreciate the environment.

Facilities within the camp include a swimming pool, an air-conditioned lounge and dining room and a lala-palm enclosed African boma, in which sumptuous dinners are savoured under the magnificent African night sky and around a blazing fire. A well appointed curio shop complements the facilities.

#### **Mashatu Main Camp Amenities**

- Capacity = 28 guests.
- 14 Luxury double/twin suites.
- En-suite luxury bathroom per suite.
- Purified water.
- Lala-Palm enclosed boma where dinner is held under the stars.
- Safari Boutique.
- Maximum number of guests per game viewing vehicle is 7.
- 24-hour temperature control.
- Insect proof screening on all windows and sliding doors.
- Insect repellent supplied in all bedrooms and on all vehicles.
- Laundry service.
- Safari Bar featuring an international selection of beverages.

